

- Expansion to existing waste disposal site (WDS), west of town of Beardmore
- Far from Geraldton and Longlac
- Current landfill operations and gravel road
- Will require additional land acquisition

1
Beardmore WDS
Area: 30 ha

Approximate size of a typical waste system:

~ 35 ha

Q1 Are there any known reasons why the potential site would not be supported by you or your community?

SITE 1 Yes No Undecided

Q2 If you would like to elaborate or share more information about the site, please consider indicating locations of concerns on the map.



- LEGEND:**
- ★ Current Active Waste Disposal Sites
 - Potential Sites (Nov 2023)
 - 500 m from Designated Residential Areas
 - Waterbody 50 Metre Buffer
 - Trapping Area Boundaries
 - AA### Trapping Area Numbers
 - Mining Claim Boundaries

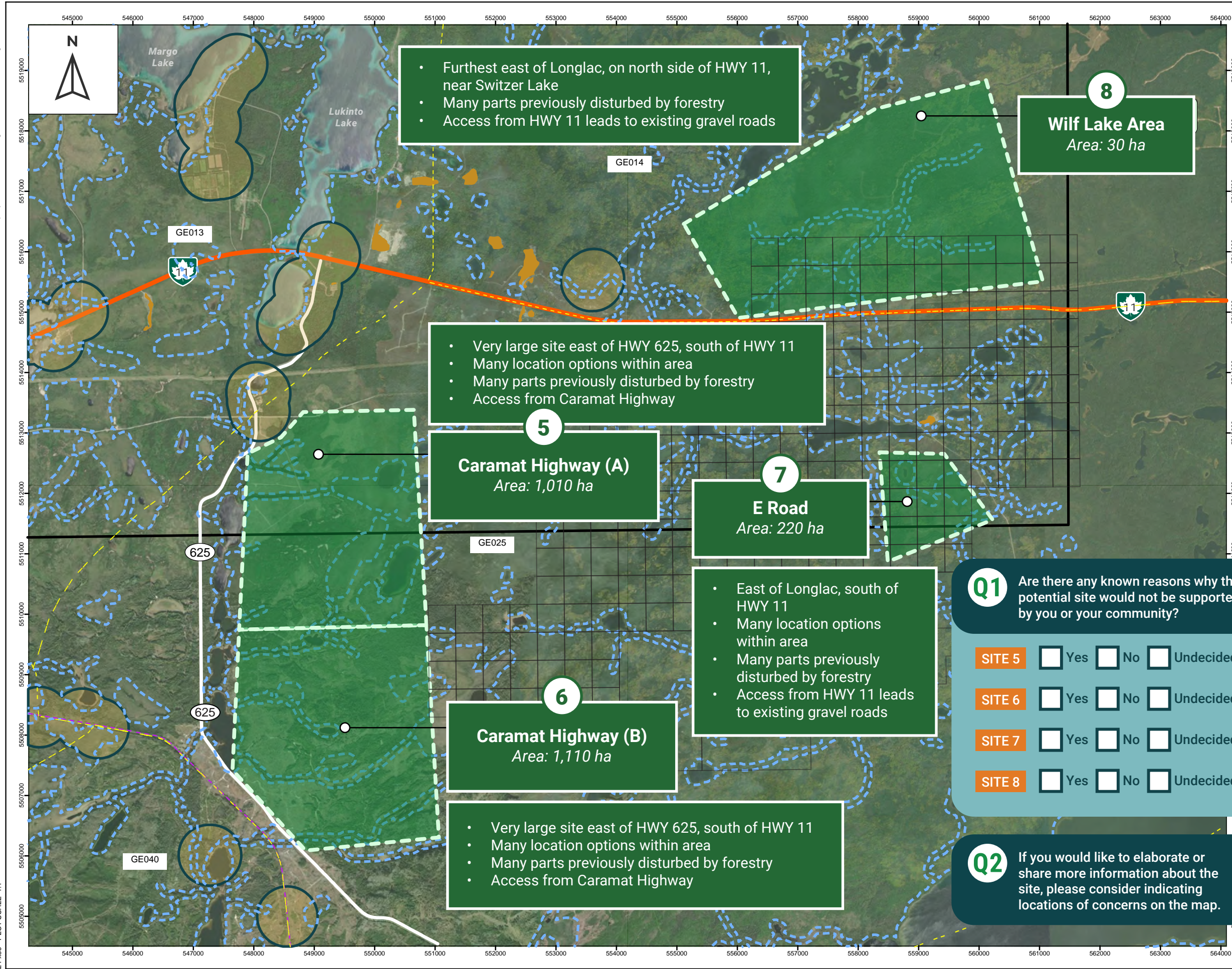
NOTES:
1. All units are metric and in metres unless otherwise specified. Transverse Mercator Projection, NAD 1983, Zone 16. Elevations are in metres above sea level (MSL).
2. Imagery Source: ESRI Base

DRAFT

200 0 200 400 600
Metres

SCALE: 1:7,500 METRIC 24"x36"
SCALE: 1:15,000 METRIC 11"x17"

A	24/01/16	FOR INFORMATION ONLY	TG	BAT
NO.	YYMMDD	DESCRIPTION	ISSUED BY	CHECK BY
REVISIONS / ISSUE				
KGS GROUP		MUNICIPALITY OF GREENSTONE		
GREENSTONE LANDFILL EA				
EXCLUSION MAPPING BEARDMORE WDS SITE				
JANUARY 2024		FIGURE 02		REV A



- Furthest east of Longlac, on north side of HWY 11, near Switzer Lake
- Many parts previously disturbed by forestry
- Access from HWY 11 leads to existing gravel roads

- Very large site east of HWY 625, south of HWY 11
- Many location options within area
- Many parts previously disturbed by forestry
- Access from Caramat Highway

- East of Longlac, south of HWY 11
- Many location options within area
- Many parts previously disturbed by forestry
- Access from HWY 11 leads to existing gravel roads

- Very large site east of HWY 625, south of HWY 11
- Many location options within area
- Many parts previously disturbed by forestry
- Access from Caramat Highway

8
Wilf Lake Area
Area: 30 ha

5
Caramat Highway (A)
Area: 1,010 ha

7
E Road
Area: 220 ha

6
Caramat Highway (B)
Area: 1,110 ha

Q1 Are there any known reasons why the potential site would not be supported by you or your community?

SITE 5 Yes No Undecided

SITE 6 Yes No Undecided

SITE 7 Yes No Undecided

SITE 8 Yes No Undecided

Q2 If you would like to elaborate or share more information about the site, please consider indicating locations of concerns on the map.

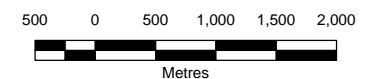


LEGEND:

- ★ Current Active Waste Disposal Sites
- Potential Sites (Nov 2023)
- ▭ Municipality of Greenstone Boundary
- ▭ 500 m from Designated Residential Areas
- ▭ Waterbody 50 Metre Buffer
- ▭ Railway
- ▭ Quarry
- ▭ Trapping Area Boundaries
- AA### Trapping Area Numbers
- ▭ Mining Claim Boundaries

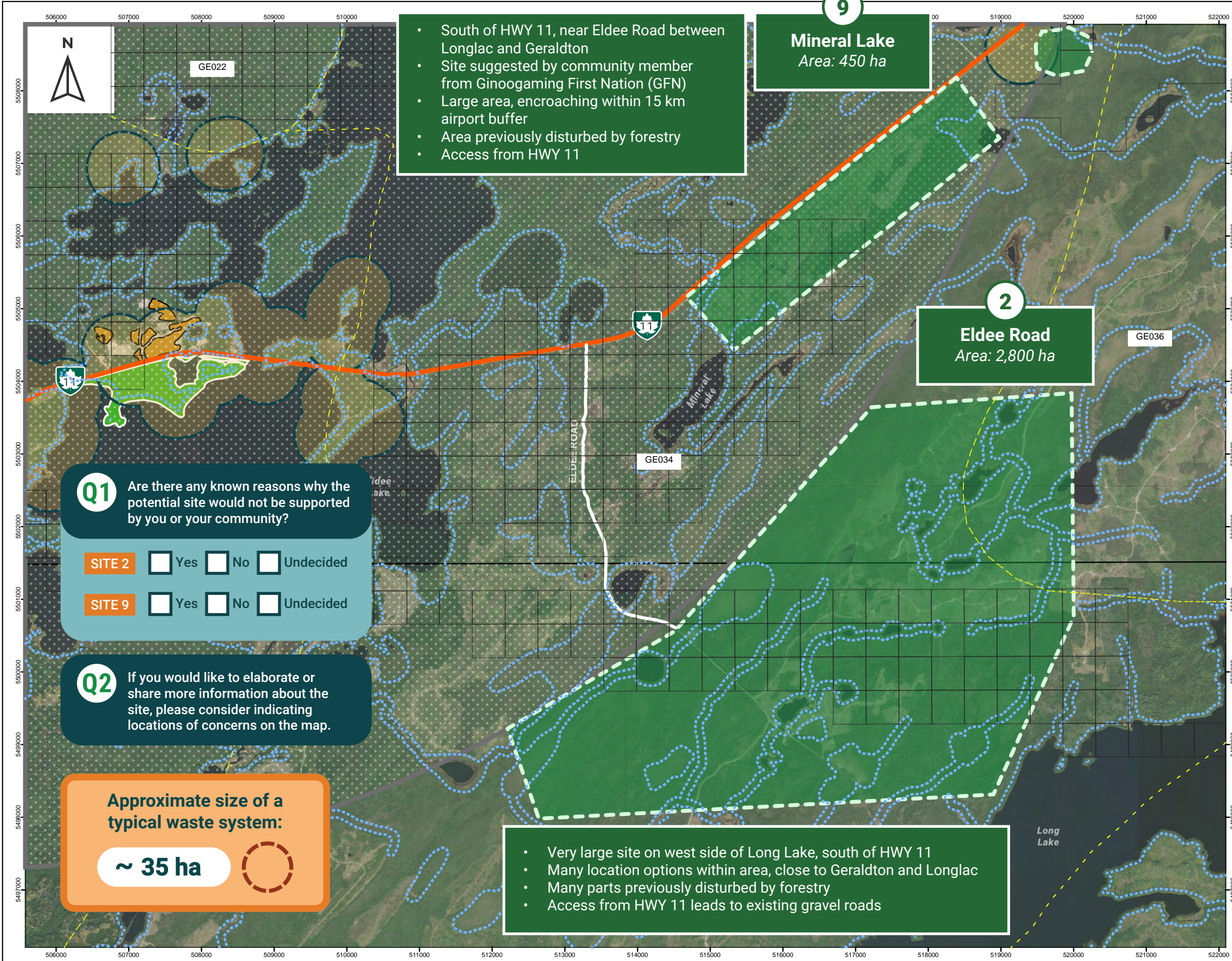
NOTES:
1. All units are metric and in metres unless otherwise specified. Transverse Mercator Projection, NAD 1983, Zone 16. Elevations are in metres above sea level (MSL).
2. Imagery Source: ESRI Base

DRAFT



SCALE: 1:30,000 METRIC 24"x36"
SCALE: 1:60,000 METRIC 11"x17"

A	24/01/16	FOR INFORMATION ONLY	TG	BAT
NO.	YYMMDD	DESCRIPTION	ISSUED BY	CHECK BY
REVISIONS / ISSUE				
KGS GROUP		MUNICIPALITY OF GREENSTONE		
GREENSTONE LANDFILL EA				
EXCLUSION MAPPING CARAMAT HIGHWAY AREA A AND B, WILF LAKE AREA, E ROAD SITE				
JANUARY 2024		FIGURE 04		REV. A



- South of HWY 11, near Eldee Road between Longlac and Geraldton
- Site suggested by community member from Ginoogaming First Nation (GFN)
- Large area, encroaching within 15 km airport buffer
- Area previously disturbed by forestry
- Access from HWY 11

9
Mineral Lake
 Area: 450 ha

2
Eldee Road
 Area: 2,800 ha

Q1 Are there any known reasons why the potential site would not be supported by you or your community?

SITE 2 Yes No Undecided

SITE 9 Yes No Undecided

Q2 If you would like to elaborate or share more information about the site, please consider indicating locations of concerns on the map.

Approximate size of a typical waste system:
 ~ 35 ha

- Very large site on west side of Long Lake, south of HWY 11
- Many location options within area, close to Geraldton and Longlac
- Many parts previously disturbed by forestry
- Access from HWY 11 leads to existing gravel roads

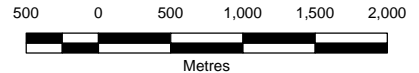


LEGEND:

- Potential Sites (Nov 2023)
- Municipality of Greenstone Boundary
- 500 m from Designated Residential Areas
- Waterbody 50 Metre Buffer
- Airport Buffer
- Quarry
- Provincial Park
- Railway
- Trapping Area Boundaries
- AA###** Trapping Area Numbers
- Mining Claim Boundaries
- Trans-Canada Highway

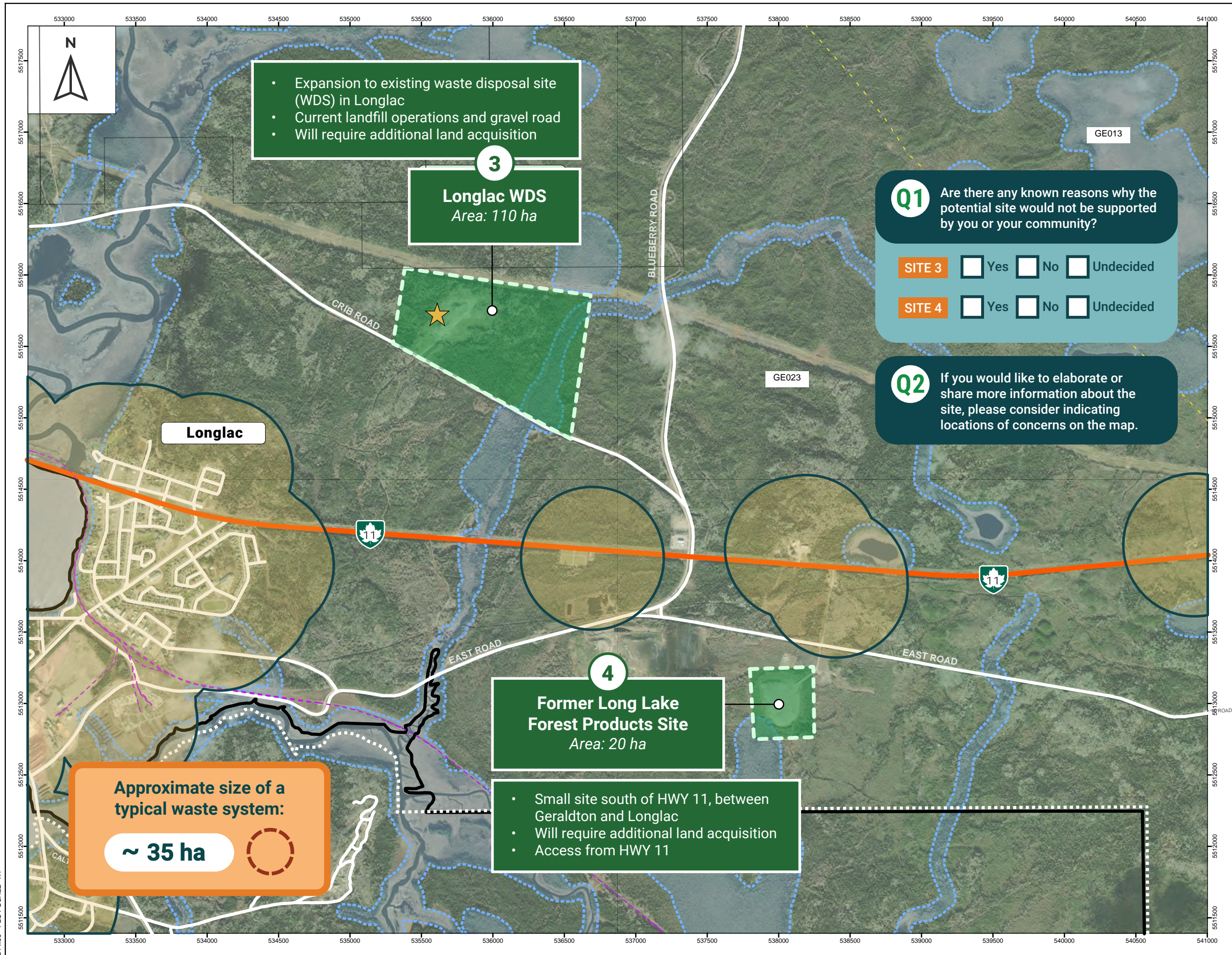
NOTES:
 1. All units are metric and in metres unless otherwise specified. Transverse Mercator Projection, NAD 1983, Zone 16. Elevations are in metres above sea level (MSL).
 2. Imagery Source: ESRI Base

DRAFT



SCALE: 1:25,000 METRIC 24"x36"
 SCALE: 1:50,000 METRIC 11"x17"

A	24/01/16	FOR INFORMATION ONLY	TG	BAT
NO.	YYMMDD	DESCRIPTION	ISSUED BY	CHECK BY
REVISIONS / ISSUE				
GREENSTONE LANDFILL EA				
EXCLUSION MAPPING ELDEE ROAD AREA				
JANUARY 2024		FIGURE 05		REV A



- Expansion to existing waste disposal site (WDS) in Longlac
- Current landfill operations and gravel road
- Will require additional land acquisition

3
Longlac WDS
 Area: 110 ha

Q1 Are there any known reasons why the potential site would not be supported by you or your community?

SITE 3 Yes No Undecided

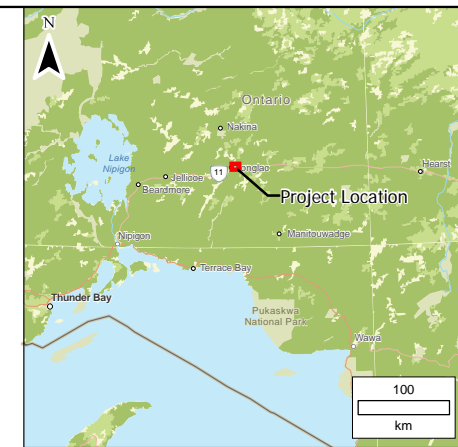
SITE 4 Yes No Undecided

Q2 If you would like to elaborate or share more information about the site, please consider indicating locations of concerns on the map.

4
Former Long Lake Forest Products Site
 Area: 20 ha

- Small site south of HWY 11, between Geraldton and Longlac
- Will require additional land acquisition
- Access from HWY 11

Approximate size of a typical waste system:
~ 35 ha

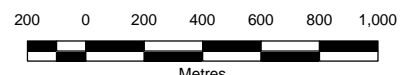


LEGEND:

- ★ Current Active Waste Disposal Sites
- Green dashed outline Potential Sites (Nov 2023)
- Black outline Municipality of Greenstone Boundary
- White dashed outline First Nation Boundary
- Yellow outline 500 m from Designated Residential Areas
- Blue dashed outline Waterbody 50 Metre Buffer
- Purple dashed outline Railway
- Yellow dashed outline Trapping Area Boundaries
- AA### Trapping Area Numbers
- Black outline Mining Claim Boundaries

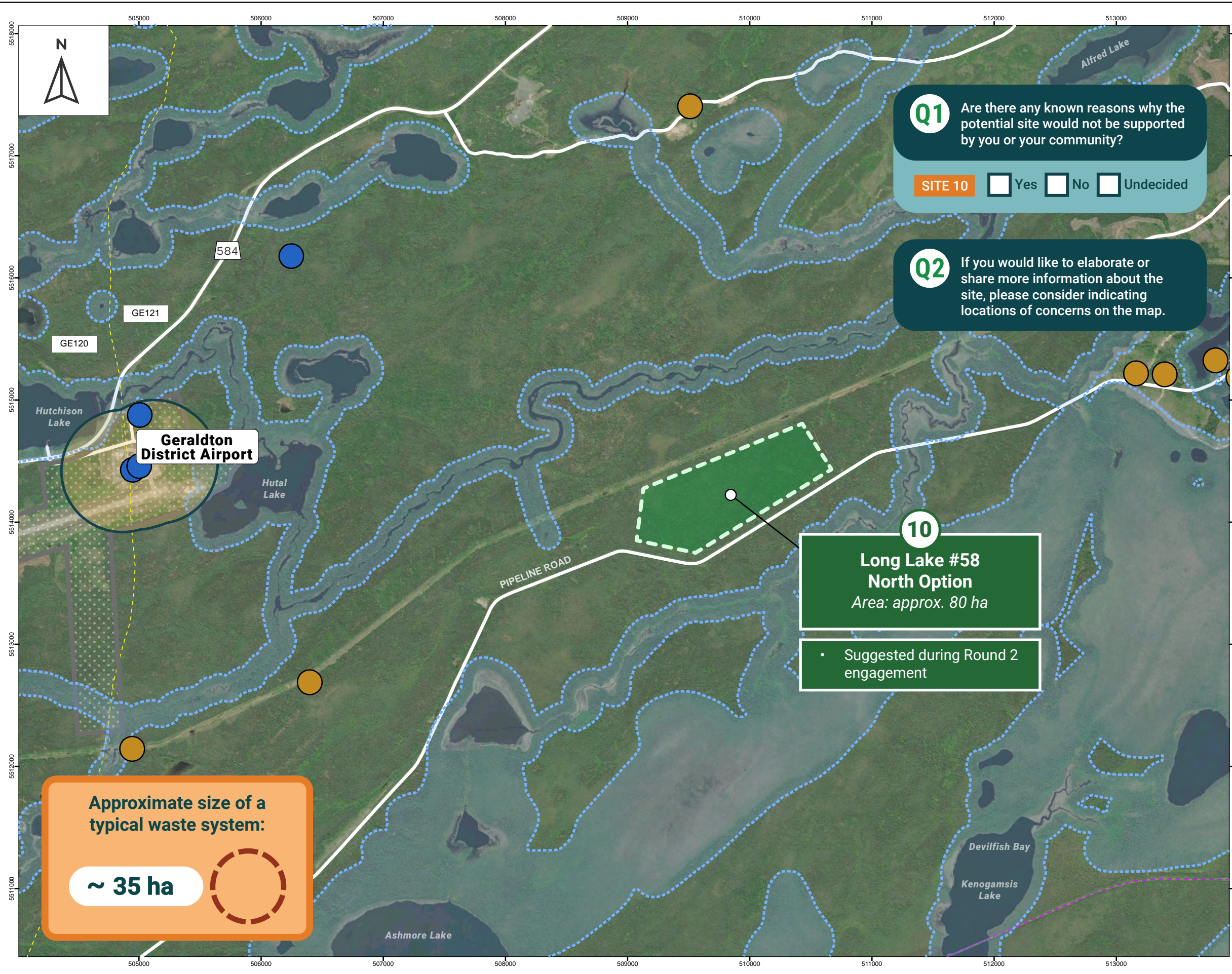
NOTES:
 1. All units are metric and in metres unless otherwise specified. Transverse Mercator Projection, NAD 1983, Zone 16. Elevations are in metres above sea level (MSL).
 2. Imagery Source: ESRI Base

DRAFT



SCALE: 1:12,500 METRIC 24"x36"
 SCALE: 1:25,000 METRIC 11"x17"

A	24/01/16	FOR INFORMATION ONLY	TG	BAT
NO.	YYMMDD	DESCRIPTION	ISSUED BY	CHECK BY
REVISIONS / ISSUE				
KGS GROUP		MUNICIPALITY OF GREENSTONE		
GREENSTONE LANDFILL EA				
EXCLUSION MAPPING LONGLAC WDS SITE AND FORMER LONG LAKE FOREST PRODUCTS SITE				
JANUARY 2024		FIGURE 03		REV. A



Q1 Are there any known reasons why the potential site would not be supported by you or your community?

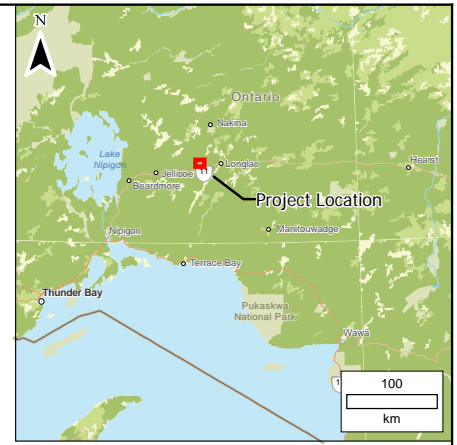
SITE 10 Yes No Undecided

Q2 If you would like to elaborate or share more information about the site, please consider indicating locations of concerns on the map.

10
Long Lake #58 North Option
 Area: approx. 80 ha

• Suggested during Round 2 engagement

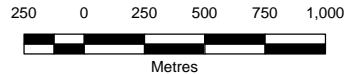
Approximate size of a typical waste system:
~ 35 ha



- LEGEND:**
- Potential Site (Nov 2025)
 - 500 m from Designated Residential Areas
 - Waterbody 50 Metre Buffer
 - Well 100 Metre Buffer
 - Pit/Quarry 100 Metre Buffer
 - Airport Buffer
 - Railway
 - Trapping Area Boundaries
 - Trapping Area Numbers

NOTES:
 1. All units are metric and in metres unless otherwise specified. Transverse Mercator Projection, NAD 1983, Zone 16. Elevations are in metres above sea level (MSL).
 2. Imagery Source: ESRI Base

DRAFT



SCALE: 1:15,000 METRIC 24"x36"
 SCALE: 1:50,000 METRIC 11"x17"

A	25/10/17	FOR INFORMATION ONLY	TG	BAT
NO.	YYMMDD	DESCRIPTION	ISSUED BY	CHECK BY
REVISIONS / ISSUE				
GREENSTONE LANDFILL EA				
EXCLUSION MAPPING LONG LAKE #58 NORTH OPTION				
NOVEMBER 2025		FIGURE 07		REV: A