

• Furthest east of Longlac, on north side of HWY 11, near Switzer Lake  
• Many parts previously disturbed by forestry  
• Access from HWY 11 leads to existing gravel roads

8  
**Wilf Lake Area**  
Area: 30 ha

• Very large site east of HWY 625, south of HWY 11  
• Many location options within area  
• Many parts previously disturbed by forestry  
• Access from Caramat Highway

5  
**Caramat Highway (A)**  
Area: 1,010 ha

7  
**E Road**  
Area: 220 ha

• East of Longlac, south of HWY 11  
• Many location options within area  
• Many parts previously disturbed by forestry  
• Access from HWY 11 leads to existing gravel roads

6  
**Caramat Highway (B)**  
Area: 1,110 ha

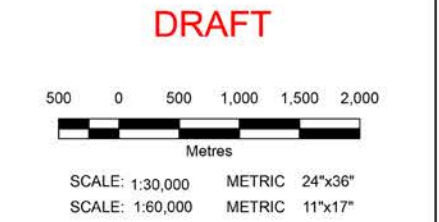
• Very large site east of HWY 625, south of HWY 11  
• Many location options within area  
• Many parts previously disturbed by forestry  
• Access from Caramat Highway



**Approximate size of a typical waste system:**  
**~ 35 ha**

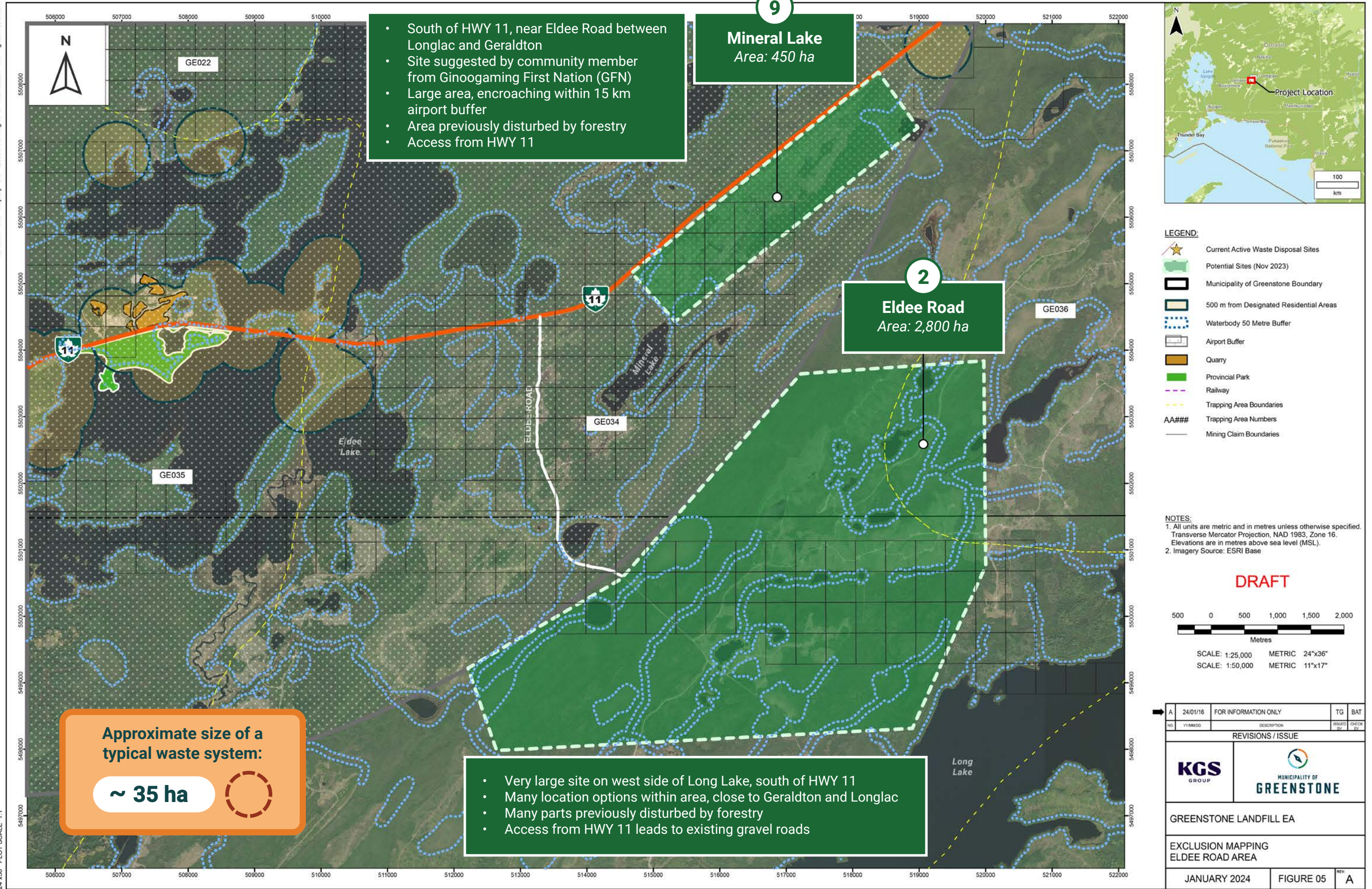


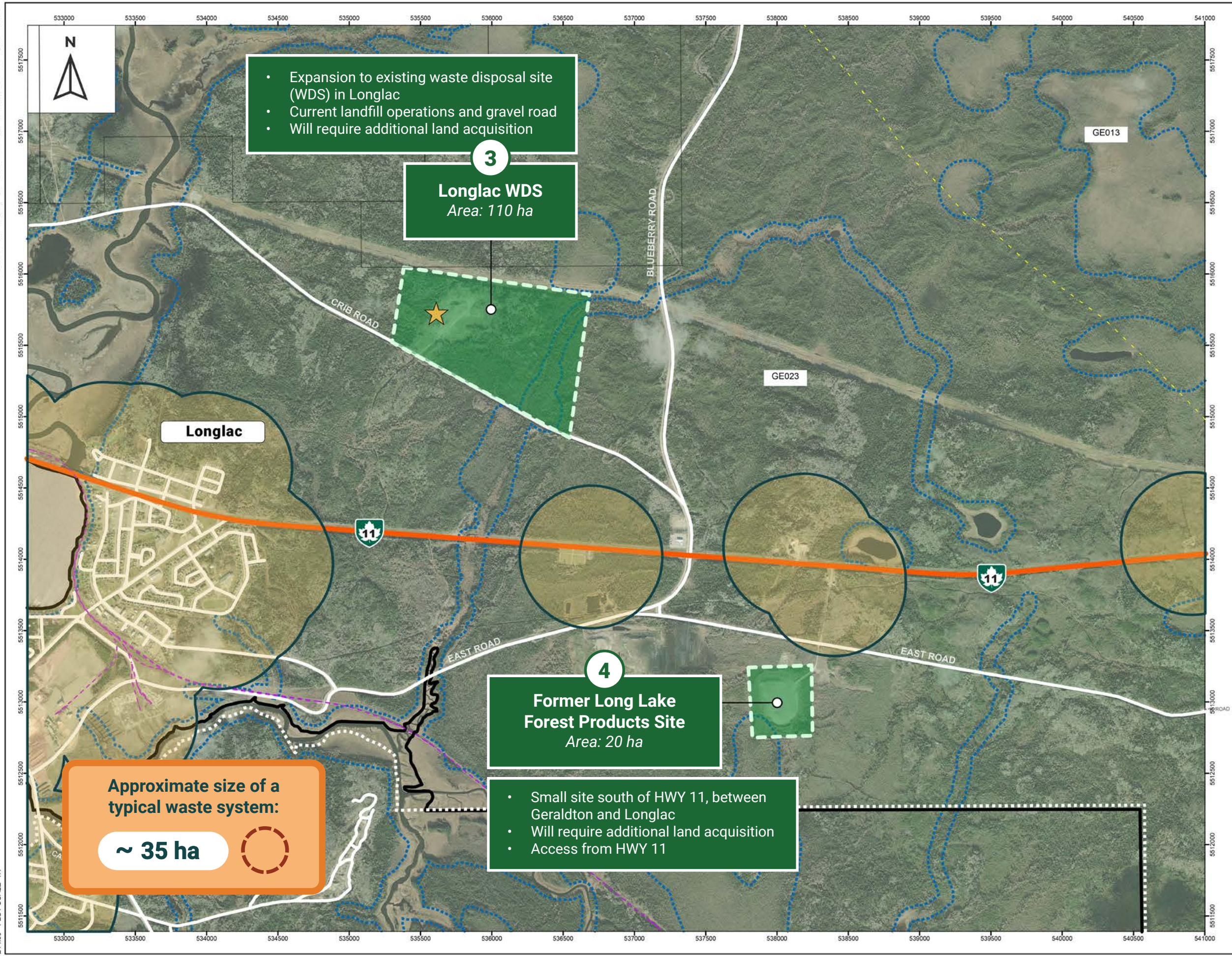
- LEGEND:**
- ★ Current Active Waste Disposal Sites
  - Potential Sites (Nov 2023)
  - ▭ Municipality of Greenstone Boundary
  - ▭ 500 m from Designated Residential Areas
  - ▭ Waterbody 50 Metre Buffer
  - ▭ Railway
  - ▭ Quarry
  - ▭ Trapping Area Boundaries
  - AA### Trapping Area Numbers
  - ▭ Mining Claim Boundaries

**NOTES:**  
1. All units are metric and in metres unless otherwise specified.  
Transverse Mercator Projection, NAD 1983, Zone 16.  
Elevations are in metres above sea level (MSL).  
2. Imagery Source: ESRI Base



A	24/01/16	FOR INFORMATION ONLY		TG	BAT
NO.	YYMMDD	DESCRIPTION		ISSUED BY	CHECK BY
REVISIONS / ISSUE					
		 MUNICIPALITY OF <b>GREENSTONE</b>			
GREENSTONE LANDFILL EA					
EXCLUSION MAPPING CARAMAT HIGHWAY AREA A AND B, WILF LAKE AREA, E ROAD SITE					
JANUARY 2024		FIGURE 04		REV	A





- Expansion to existing waste disposal site (WDS) in Longlac
- Current landfill operations and gravel road
- Will require additional land acquisition

**3**  
**Longlac WDS**  
Area: 110 ha

**4**  
**Former Long Lake Forest Products Site**  
Area: 20 ha

Approximate size of a typical waste system:  
**~ 35 ha**

- Small site south of HWY 11, between Geraldton and Longlac
- Will require additional land acquisition
- Access from HWY 11



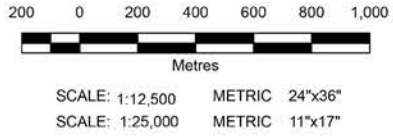
- LEGEND:**
- ★ Current Active Waste Disposal Sites
  - Potential Sites (Nov 2023)
  - Municipality of Greenstone Boundary
  - First Nation Boundary
  - 500 m from Designated Residential Areas
  - Waterbody 50 Metre Buffer
  - Railway
  - Trapping Area Boundaries
  - AA### Trapping Area Numbers
  - Mining Claim Boundaries

**NOTES:**



1. All units are metric and in metres unless otherwise specified.  
Transverse Mercator Projection, NAD 1983, Zone 16.  
Elevations are in metres above sea level (MSL).

2. Imagery Source: ESRI Base

**DRAFT**



➡

A	24/01/16	FOR INFORMATION ONLY		TG	BAT	
NO.	Y/N/MD	DESCRIPTION			ISSUED BY	CHECK BY
REVISIONS / ISSUE						
		 MUNICIPALITY OF <b>GREENSTONE</b>				
GREENSTONE LANDFILL EA						
EXCLUSION MAPPING LONGLAC WDS SITE AND FORMER LONG LAKE FOREST PRODUCTS SITE						
JANUARY 2024			FIGURE 03		REV: A	