

B716 AERODROME/FACILITY DIRECTORY

NAKINA ON

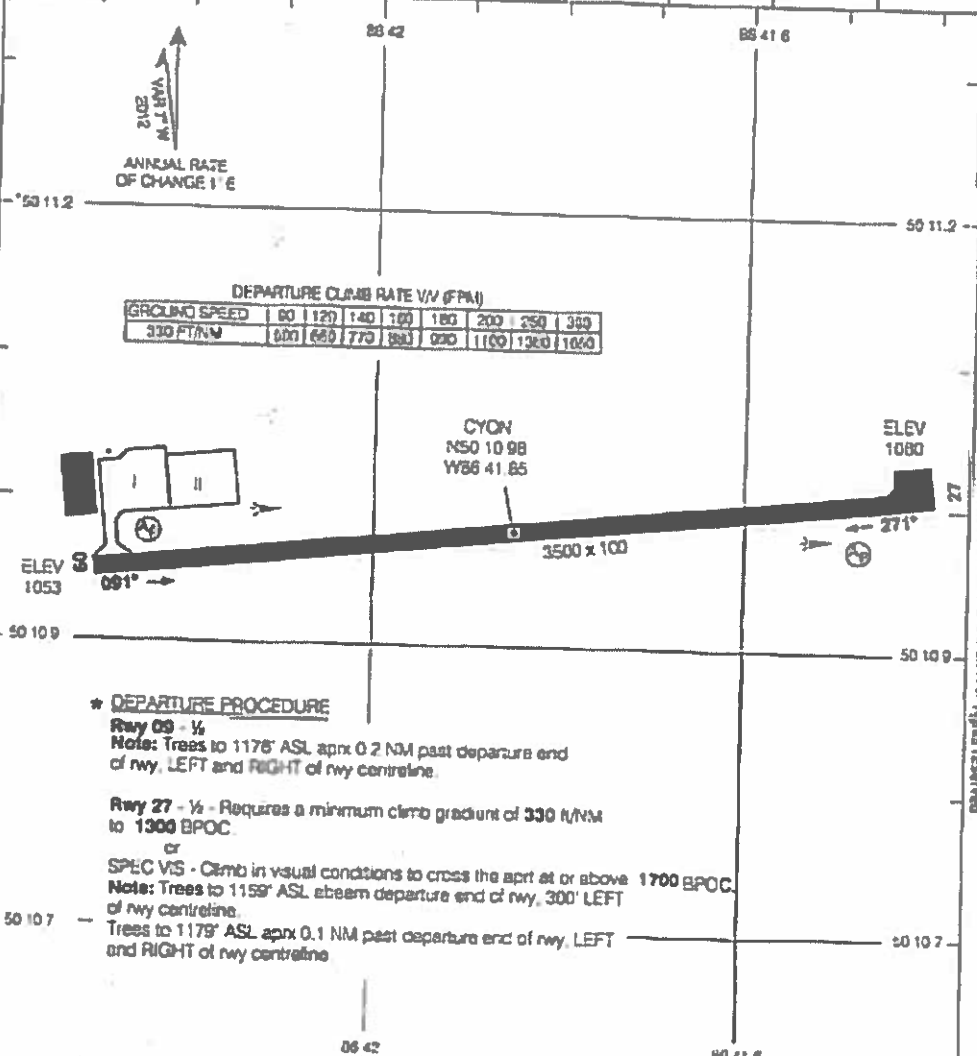
CYGN

REF	N50 10 59 W86 41 51 Adj 7°W (2012) UTC-5(4) Elev 1061' A5008 LO4 HI4 CAP	
OPR	The Loomex Group 807-329-5919 Cert Ldg fees	
PF	A-1 C-2,4,5 D-3	
FLT PLN	NOTAM FILE CYGO FIC London 858-WXBRIEF (Toll free within Canada) or 866-541-4104 (Toll free within Canada & USA)	
SERVICES	12-22Z† Mon-Sat exc Jan 01 & Dec 25 1 hr PN Call out chg after hrs FUEL 100LL, JA-1 (FSII avbl) 12-22Z† Mon-Sat O/T 807-853-8540/854-8200 S 4,6	
RWY DATA	Rwy 09(091°)/27(271°) 3500x100 ASPH	
RWY CERT	Rwy 09/27 AGN IIIA	
APRON	Apron II Pvt PN 807-329-5752	
RCR	Opr 12-22Z† Mon-Sat exc Jan 1 and Dec 25 O/T PN Call out chg after hrs CRFI	
LIGHTING	09-(TE LO) AP, 27-(TE LO) AP ARCAL-122.8 type K	
COMM		
ATF	UNICOM lrd hrs O/T tlc 122.8 5NM 4100 ASL	
NAV		
NDB	ON 233 (M) N50 10 45 W86 37 53	
PRO	Consistent with safety, no turns to be made over the built up area of town.	

AERODROME CHART

NAKINA, ON
CYQN

		UNICOM - 122.8		RADIO LONCA - 123.47	
DECL. DIST.	08	27			
TORA	3500	3500			
TODA	3500	3500			
ASDA	3500	3500			
LDA	3500	3500			



*** DEPARTURE PROCEDURE**

Runy 08 - 1/2
Note: Trees to 1178' ASL aprx 0.2 NM past departure end of rwy, LEFT and RIGHT of rwy centreline.

Runy 27 - 1/2 - Requires a minimum climb gradient of 330 ft/NM to 1300 BPOC.
 or
 SPEC VIS - Climb in visual conditions to cross the aprt at or above 1700 BPOC.
Note: Trees to 1159' ASL abeam departure end of rwy, 300' LEFT of rwy centreline.
 Trees to 1178' ASL aprx 0.1 NM past departure end of rwy, LEFT and RIGHT of rwy centreline.

TAKE-OFF MINIMA
 Runy 08, 27: *



AERODROME CHART
 EFF 25 APR 19

CYQN

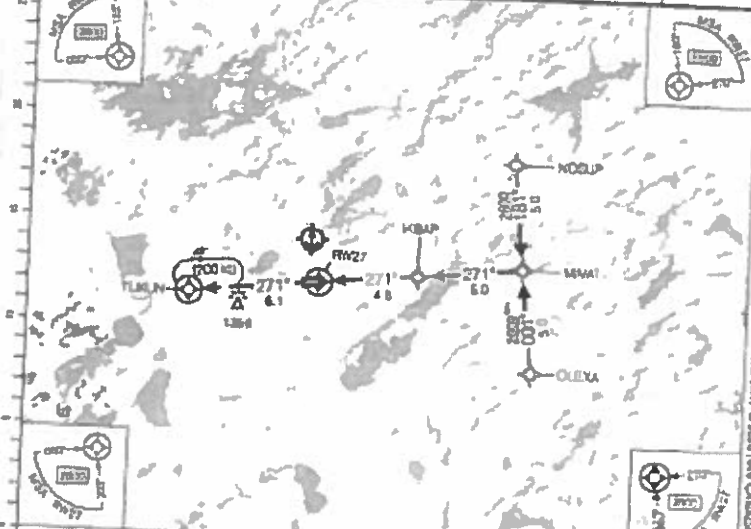
CYQN-AD

Source of Canadian Civil Aeronautical Data: © 2020 NAV CANADA All rights reserved

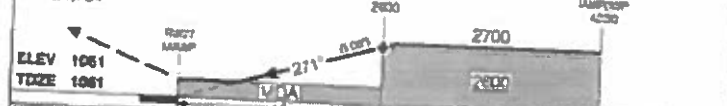
RNAV (GNSS) RWY 27

NAKINA, ON
CYON

SAFE ALT 150 000 3100		RNAV	APCH CRZ 271*	MSL ALT 2700	LDA 3800	ARCAL 132 030
RADIO London - 123.47		UNICOM - 122.1				



DIST FROM RWY	1	2	3	4	4.8	6	7	8	8	9.8
ALT (MSL) (PATH)	1500	1700	2100	2410	2700	3100	3200	3710	4010	4210



GRADE (M) CYCLES	CATEGORY			
	A	B	C	D
	1500	2100	1%	

RNAV (GNSS) RWY 27
EFT 1000 18

CYON-123-10

CYON



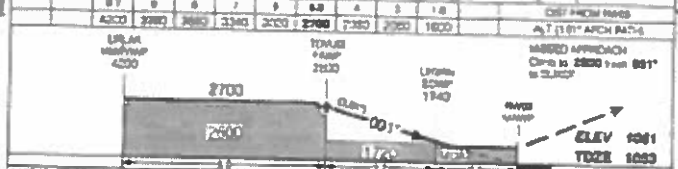
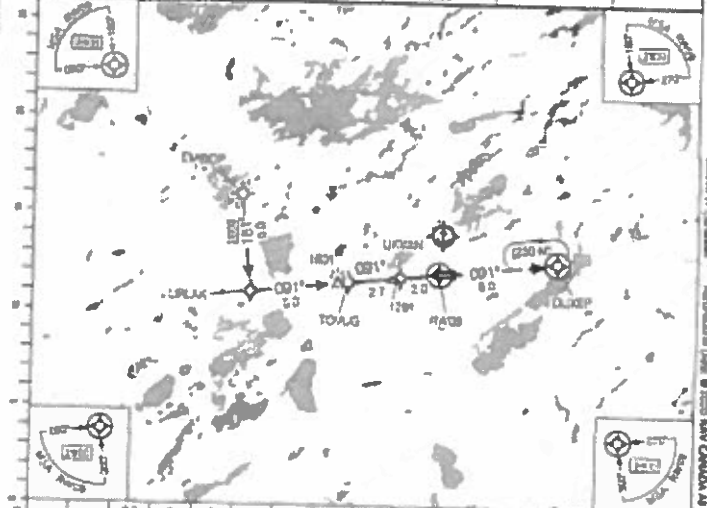
239
CYON-IMP-3A

RNAV (GNSS) RWY 09

STATION 0241014 UN1 P10

MAGNA, ON
CYON

RADIO London - 123.47		UNICOM - 122.1		ARCAL 123.875
SAFE ALT 100 MB 3100	RNAF	APDN CRS 091°	MIN ALT T0V140 2000	LDA 2000



GRADE (M/FT)	CATEGORY	UNR			
		A	B	C	D
		1600	(547)	1%	
Grade	Width	Side Slope			
1/1	3/1				
2/1	4/1				
3/1	5/1				
4/1	6/1				
5/1	7/1				

RNAV (GNSS) RWY 09
0241014

CYON-IMP-3A

CYON